

Green X18



10-Year Warranty
full parts incl. sensors



49.5 μ m Resolution
CMOS Sensor



4x4 ~ 18x24 cm
Select your FOV



Effective Dose Data
up to 70% lower



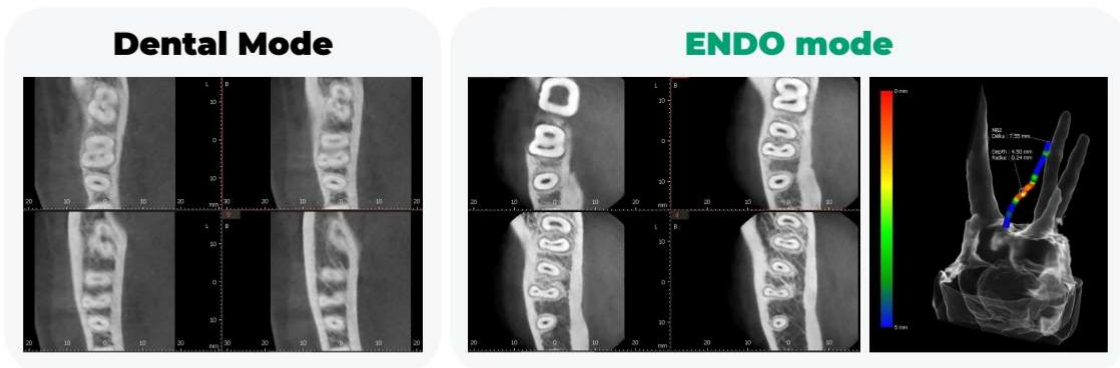
PANO ~ CBCT
Ceph & Model Scan

SELECT YOUR FOV
4x4 ~ 18x24 cm

vatech

+ ENDO MODE WITH THE HIGHEST RESOLUTION

With its 4 cm x 4 cm volume mode and 49.5 micron voxel size, the Endo mode will optimize treatment of highly-focused regions of interest. It is ideal for endodontic use because the dentist is able to achieve an extraordinary image in a high-resolution voxel size.



+ MULTI FOV SELECTION

Green X 18 offers a range of selectable fields of view. The Multi FOV option allows users to select the optimum FOV mode while minimizing exposure to areas that are not in the region of interest. Select the proper FOV size (from 4x4 to 18x24 cm) based on your diagnostic need.

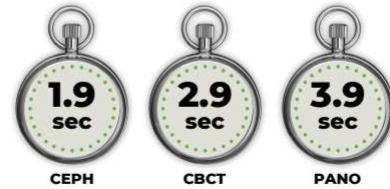
4x4 / 5x5	8x5 / 8x8	16x11	18x15/18x24*
Endo & Single implant	Arch	Dual Arch	Sinus & TMJ *Stitching

Green X18



+ GREEN SCAN TIME

Due to its scan time, the Green X 18 minimizes motion artifact and enables faster workflow. It produces superb diagnostic images, which will be a source of pride for any dental practice. Focusing on the highest quality of patient care, Vatech strives to improve the health and safety of your patients.



+ THE ADVANCED 4-IN-1 DIGITAL X-RAY IMAGING SYSTEM

Green X 18 is an advanced 4-in-1 digital x-ray imaging system that incorporates Pano, Ceph (optional), CBCT & Model Scan. With Vatech's extensive experience in the dental imaging field the Green X provides high-quality images with lower radiation by combining image processing.



+ INSIGHT 2.0 / FREE FOV

The Insight Pan is capable of taking a multilayered panoramic image, called an Insight Pan, which provides a unique in-depth look across a single focal trough. Insight 2.0 has an upgraded free FOV feature so you will be able to capture just the area of interest.



vatech

+ SPECIFICATIONS

Function (Device Type)	4 in 1: Pano + CBCT + Ceph + Model scan
Voxel size	4×4: 0.049 mm 5×5: 0.08–0.12 mm 8×5, 8×8: 0.12–0.2 mm 16×11, 18×15, 0.2–0.3 mm Double Scan 18×24: 0.3 mm
Focal Spot Size	0.5 mm
FOV size without stitching	4×4, 5×5, 8×5, 8×8, 16×11, 18×15 cm
FOV Double Scan	18x24 cm
Auto Pano	No
Exposure Time	Pano: 3,19-14,1 sec Ceph: 1,9-3,99 sec CBCT: 2.9 - 18 sec
Dynamic range	14 bit
Panoramic type	Pano + Magic pan + Insight Pan with free FOV (Hybrid Sensor for 3D & 2D)
Patient position	Standing, seated, wheelchair, face to face positioning
Warranty	10 year full parts warranty
Dimension	1085.0(L)×1343.5(W)×2345.4(H) mm
Weight	220,9 kg (without Ceph) 245,9 kg (with the Ceph)
SW	EzDent-i / Ez3D-i / EzOrtho
Key Features	Multi-FOV ~ Double Scan ~ Endo ~ Insight Pan ~ Magic Pan ~ Model Scan

+ DIMENSIONS

