

# SLIDEVIEW DX VS-M1

Whole Slide Imaging System

Fast, Efficient Digital Pathology



# High-Quality Images at High Speed

We combined our leading-edge technologies—including X Line objectives and True Color LED illumination—to create a fast slide scanner that delivers microscope-quality images onscreen. The SLIDEVIEW™ DX whole slide imaging system's advanced technology improves the entire digital pathology workflow to help pathologists make diagnoses efficiently with high-quality images they can rely on.





# Supports Efficient Diagnosis

Make your diagnoses with the convenience of digital slide images that you can have confidence in. The SLIDEVIEW DX system uses a dedicated objective lens based on our award-winning X Line™ series to capture images with exceptional flatness and high resolution, enabling seamless stitching and stunning whole slide images that are fully in focus.



## Microscope-Quality Images Onscreen

The objective is paired with our high color rendering True Color LED light source to provide the color reproduction necessary for H&E, IHC, and special stains.

The images are displayed on a high color rendering monitor that has sRGB wide gamut coverage tailored for digital pathology images and that supports the correctness and stability of colors over time. You can be confident that the slide images on the screen are as close as possible to what you would see looking through the oculars.



## Fast, Efficient Pathology Diagnosis Workflow

The SLIDEVIEW DX software was developed in collaboration with pathologists, so its layout and functionality will be intuitive and the system easy to learn.

The system's software integrates with your lab information system (LIS) to display the slide and patient information in one convenient window to help you remain focused on making a diagnosis. A virtual slide tray mirrors handling a physical slide on the holder for simple, familiar slide management. View images from the virtual slide tray and easily make measurements and annotations on the digital slide image.

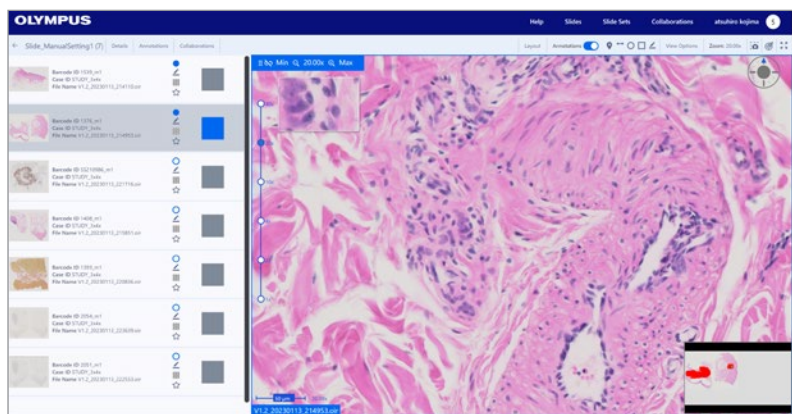
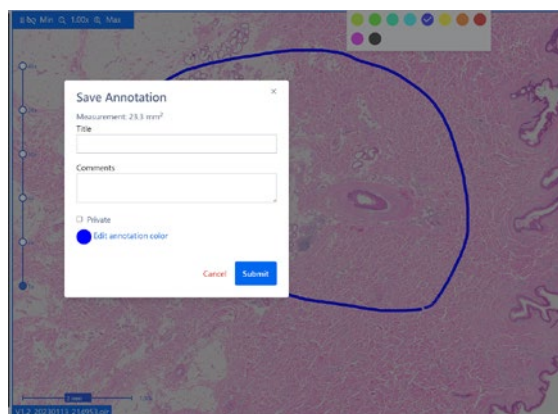
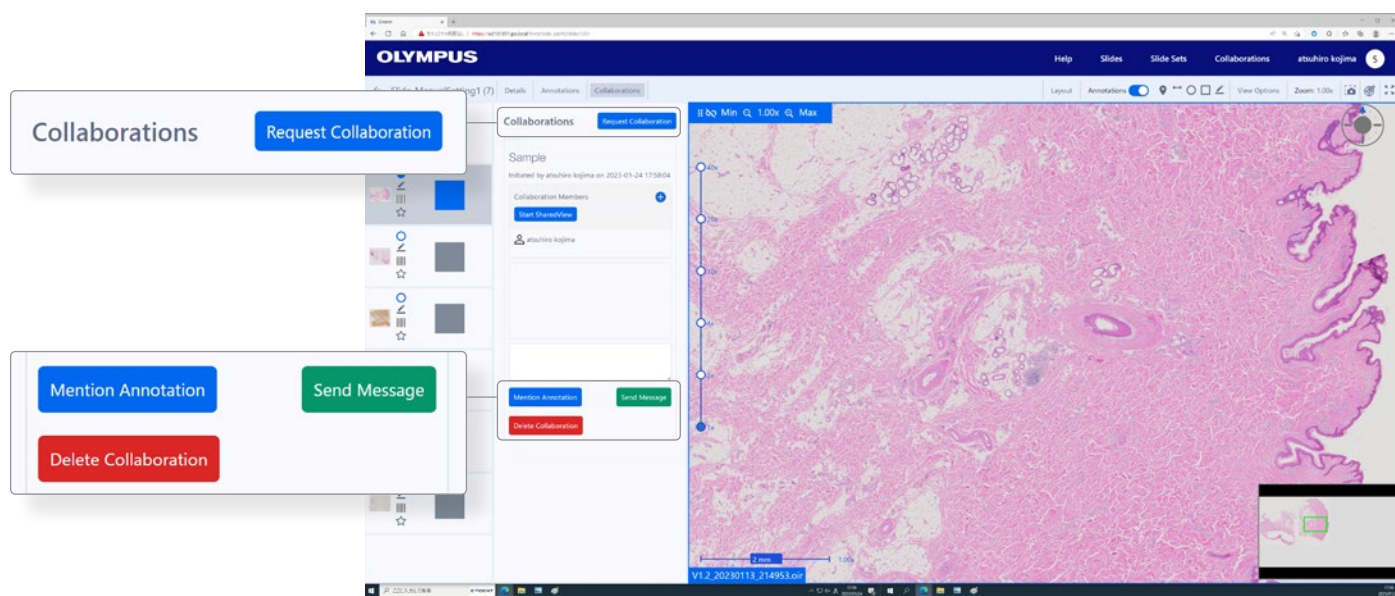


Image management system with virtual slide tray display



Annotation function

For consultation, the system has convenient collaboration tools that enable you to securely share slide images with other pathologists or experts. Users can access the image management system from a web browser without installing software.



Convenient collaboration functions

# Built for Busy Labs

The SLIDEVIEW DX system makes it easy to scan large numbers of slides. Labs can set up their system based on their preferences. You can configure the system for greater speed and slide quality, giving you flexibility over the scan plan and making it easy to find the right balance of speed and quality. If you need more capacity to run slides, additional scanners can be linked together. For example, using two scanners would allow you to process 300 slides at a time.

## Easy to Operate

The scanner's controls are easily accessible from its large touch screen, which is designed to be used while standing. This makes it easy for you to configure the scanner's controls and walk away.

Easily load the slides into the rack and then place them into the scanner. The slides are loaded vertically rather than horizontally to reduce the chance of dropping them. The system walks you through the steps to start scanning. When the scan is complete, you can check the quality of the digital slides using the same touch screen and deliver them directly to the pathologist at the push of a button.



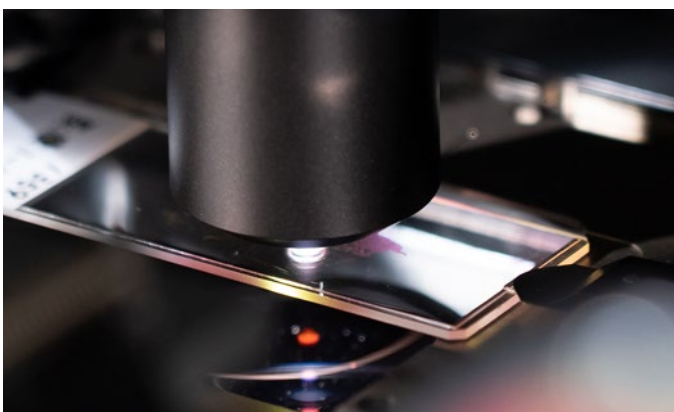
Easy slide loading



Simple touch screen operation

## High-Speed Scanning

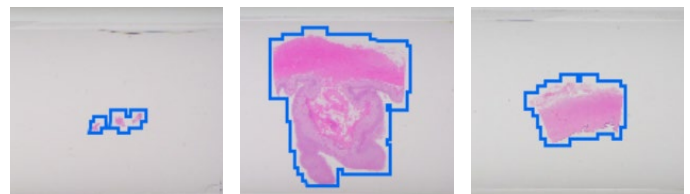
The scanner's fast, more than 80 slides per hour scan speed enables fast digitization for faster delivery to the pathologist. During the scan, the system's real-time autofocus enables you to skip the time-consuming focus mapping phase for faster scans.



## Reliable

The system's advanced AI\* automatically identifies the tissue on the slide so that only the tissue is scanned. This speeds up the scanning process and minimizes the need for rescans caused by undetected tissue.

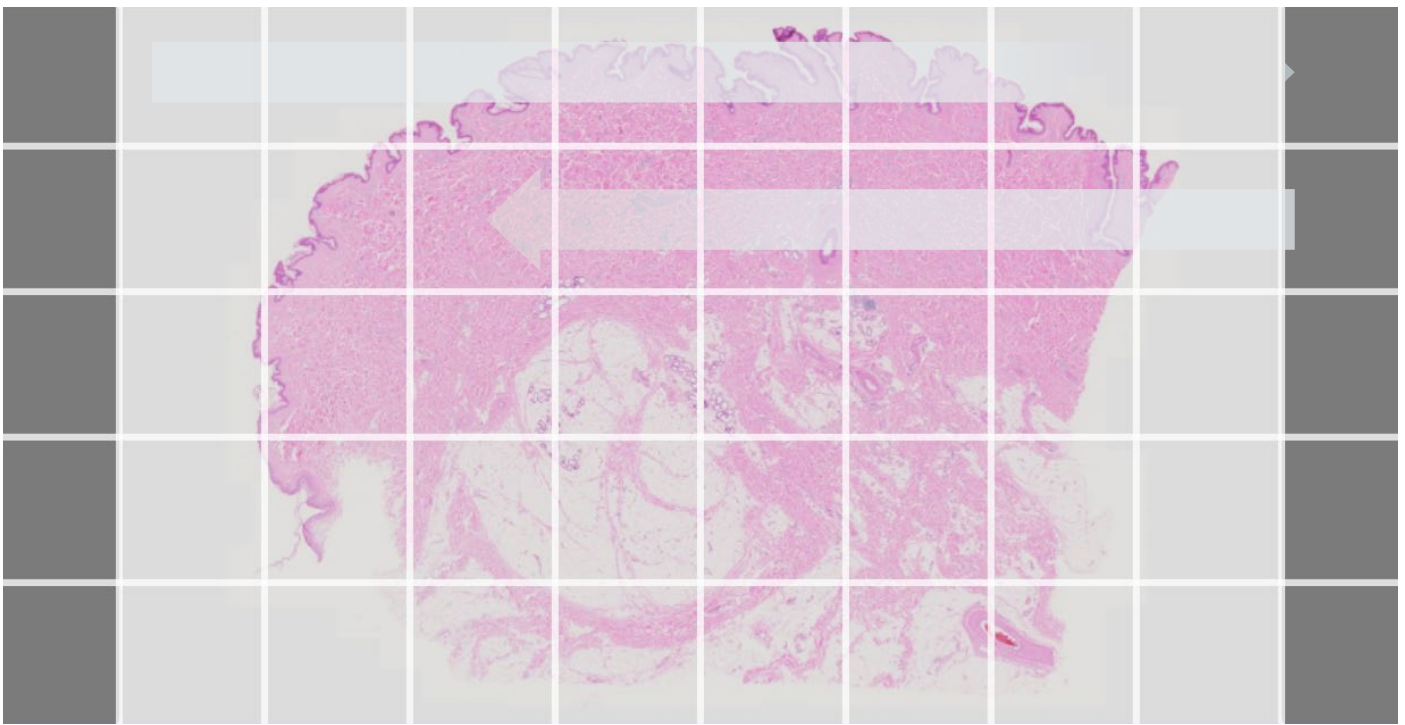
\* Machine learning-based software with regulatory framework.



Properly detected samples

## Flexible

The system has three scan modes that enable you to tailor the scan based on your lab's priorities. Speed scan mode uses real-time autofocus to acquire quality images quickly. The focus scan mode uses single-point autofocus to create a detailed focus map before scanning, improving accuracy. Lastly, with manual setting mode, you have the option to individually set each focus point, helping make faintly stained or uneven samples completely in focus.



In speed scan mode, the scanner automatically focuses on each grid square and captures images one by one. The images are then stitched together to create one large, all-in-focus image.

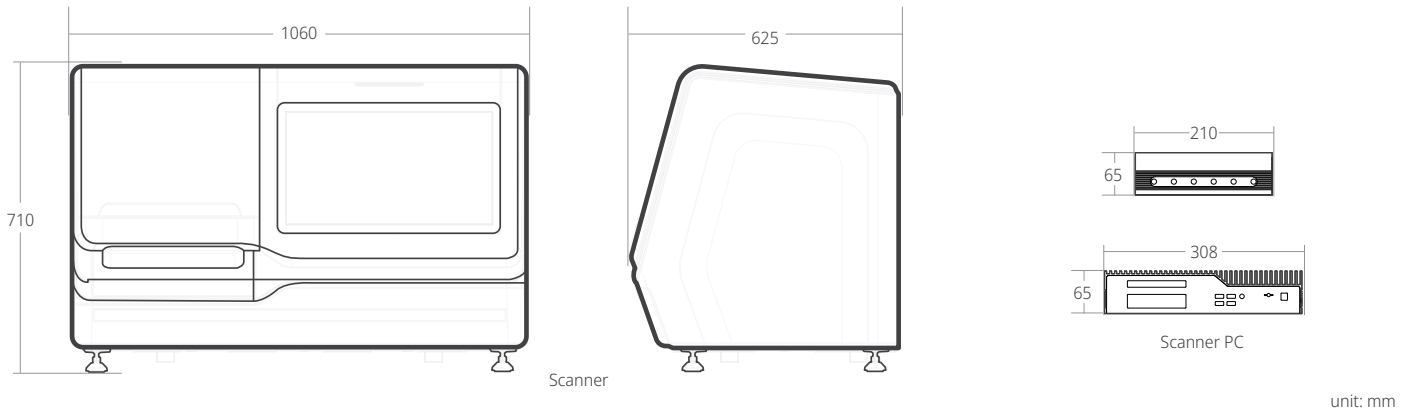
## Easy to Integrate and Manage

The Evident Management Portal (EMP) is used to configure and maintain our scanners. The EMP can be connected to multiple scanners in the laboratory. It enables you to control who has access to the scanner and EMP, set scanner configurations, such as barcode parsing and the default scan mode, and provides diagnostic information, including active status, instrument logs, audit logs, and scanner usage statistics.

The software easily integrates with your existing LIS and supports various healthcare network protocols, like HL-7. The system has HIPAA and NIST data security features, encryption, and central account management.

IT technicians can utilize the system's central account management to remotely view scanner system faults, errors, and download reports.

## SLIDEVIEW DX Dimensions



## SLIDEVIEW DX Specifications

Intended Specimen	Specimen	Glass slide with cover glass	
	Size of Glass Slide	Length: 75–76.5 mm (2.954–3.011 in.), Width: 25–26.5 mm (0.985–1.043 in.), Thickness: 0.9–1.2 mm (0.0355–0.0472 in.) (ISO 8037-1)	
	Thickness of Cover Glass	0.13–0.19 mm (0.0052–0.0074 in.) (ISO 8255-1) (recommendation: 0.17 mm)	
Scanner	Touch Screen	Built-in 21.5-inch color LCD Adjust the scan settings and observe acquired images using the touch screen	
	Slide Capacity	Up to 150 slides	
	Slide Rack	5 slide racks, up to 30 slides per rack	
	Slide Rack Adapter	For Sakura Finetek Japan Co., Ltd. slide basket (K1650009), transferring 10 slides to the slide rack at once	
	Scan Modes	Speed scan mode, focus scan mode, and manual setting mode	
	Throughput	More than 80 slides/hour (15 mm × 15 mm area at 40X equivalent resolution, speed scan mode)	
	Objective Lens	X Line extended apochromat	
	Resolution	0.23 μm/pixel (equivalent to 40X)	
	Camera	Image sensor: 1.1 inch CMOS, pixel pitch: 3.45 × 3.45 μm	
	Illuminator	High intensity and high color rendering LED (up to 50,000 hours)	
	Barcode Reader	1D Barcode	WPC (JAN/EAN/UPC-A/UPC-E), NW-7, ITF, Industrial2of5, Code39, Code128, RSS-14, RSSLimited, RSSExpanded
		2D Barcode	QR Code, DataMatrix (ECC200), MicroQR, PDF417, MicroPDF417
	Automatic Slide Detection	Yes, the slide rack and slide positions are automatically detected and displayed on the touch screen	
	Automatic Scan Area Detection	Yes	
	Anti-Vibration Function	Yes	
	LED Status Display	Hardware status, slide rack status, scanning status	
	External Dimensions (W × D × H)	1060 × 625 × 710 mm (41.7 × 24.6 × 27.9 in.)	
Weight	150 kg (330.7 lb)		
Primary Power Source	100–240 VAC, 50–60 Hz		
Power Consumption	Max. 120 W		
Environmental Conditions	Temperature range: A maximum operating range of 7°C (44.6 °F) within the limits of 15–27 °C (59–80.6 °F) (no sudden temperature changes) Humidity range: 35–80% RH (non-condensing indoor use) Pressure range: sea level to 2000 m (6561.7 ft)		
Image Management System	Display Functions	Search filters, slide list, virtual slide tray, full-screen, split, macro image, slide properties	
	View Functions	Pan, zoom, rotate, synchronization, slide navigator, rotation compass, heat map, scale, magnification stop, magnifying loupe	
	Annotation and Measurement	Flag, square, circle, line, comment description	
	Collaboration Functions	Chat, shared view	

• In Europe, SLIDEVIEW DX VS-M1 is regulatory compliant (under the name VS-M1) for IVDR (EU) and MDR(UK) for in vitro diagnostic use.  
 • In Singapore, SLIDEVIEW DX VS-M1 is listed (under the name of VS-M1) as a Class A medical device in HSA Class A SMDR.  
 • In Australia, SLIDEVIEW DX VS-M1 is included (under the name VS-M1) in the ARTG as a Class 1 IVD medical device.  
 • In New Zealand, SLIDEVIEW DX VS-M1 is regulatory compliant (under the name VS-M1) for the Medicines Act of 1981 (NZ).  
 • In India, SLIDEVIEW DX VS-M1 is regulatory compliant (under the name VS-M1-IVD) as a Class A medical device in CDSCO.  
 • In Korea, SLIDEVIEW DX VS-M1 is regulatory compliant (under the name VS-M1-IVD) as a Class 1 medical device in MFDS.

**• EVIDENT CORPORATION is ISO14001 certified.**  
 For details on certification registration, visit [olympus-lifescience.com/en/support/iso/](https://olympus-lifescience.com/en/support/iso/)  
**• EVIDENT CORPORATION is ISO9001 certified.**

**• CLASS 1 Laser Product**  
**• All company and product names are registered trademarks and/or trademarks of their respective owners.**  
**• Specifications and appearances are subject to change without any notice or obligation on the part of the manufacturer.**

This product is sold under the name SLIDEVIEW VS-M1R in the U.S. and China as a research use only product and as SLIDEVIEW VS-M1J in Japan notified (under the name VS-M1-IVD1) as a Class 1 medical device. Product currently not available in regions not specified.

**EvidentScientific.com**

**EVIDENT**

EVIDENT CORPORATION  
 Shinjuku Monolith, 2-3-1 Nishi-Shinjuku, Shinjuku-ku, Tokyo 163-0910, Japan

**OLYMPUS**