

# Operating Table

**Jl-5220**

General surgery

**Jl-5230**

Shoulder arthroscopy



**JOSTEDAL  
INDUSTRIER**

## Jostedal Industries

Jostedal Industries is a Norwegian manufacturer with focus on operating tables.

Our operating table models has been developed according to needs and experience from many years of collaboration with the Scandinavian health sector.

This means we can grant you a very efficient, reliable and durable product.

We have a number of operating and procedure tables – all electrically operated by hand control and powered by rechargeable batteries.

All products are made locally and the key words are “easy to handle” and functionality.

The entire product range is approved by NEMKO according to the highest EN, IEC standards.



*Pure Scandinavian quality*



*Standard Head Rest, gaspring operated, double articulated and detachable.*



*Standard configured with a four (4) sectional, detachable split leg section.*

*Accessory siderail (EU) included.*



# Operating Tables

*General Surgery, Scandinavian Made*

The JI-5220, our General Surgery Operating Table with focus on “easy to operate” and functionality.

Detachable Head and Leg Sections offering you options to match most applications.

Easy to operate by Handcontrol, electromechanical up/down, Back section, Trend/rev. Trend, and lateral tilt.

Foot joystick for Uro/gynea procedures.

Split leg section operated by gas spring, four(4) sectional and detachable.

Wide standard head rest (below). Double articulated for high flexibility. Alternative head supports can be fitted as well.

1.



Head rest down: 20°

2.



For patient in lateral position

3.



Head rest up: 50°

*Double swivel castors  
for easy manouvering.*

# JI-5220



Battery charger with holder.

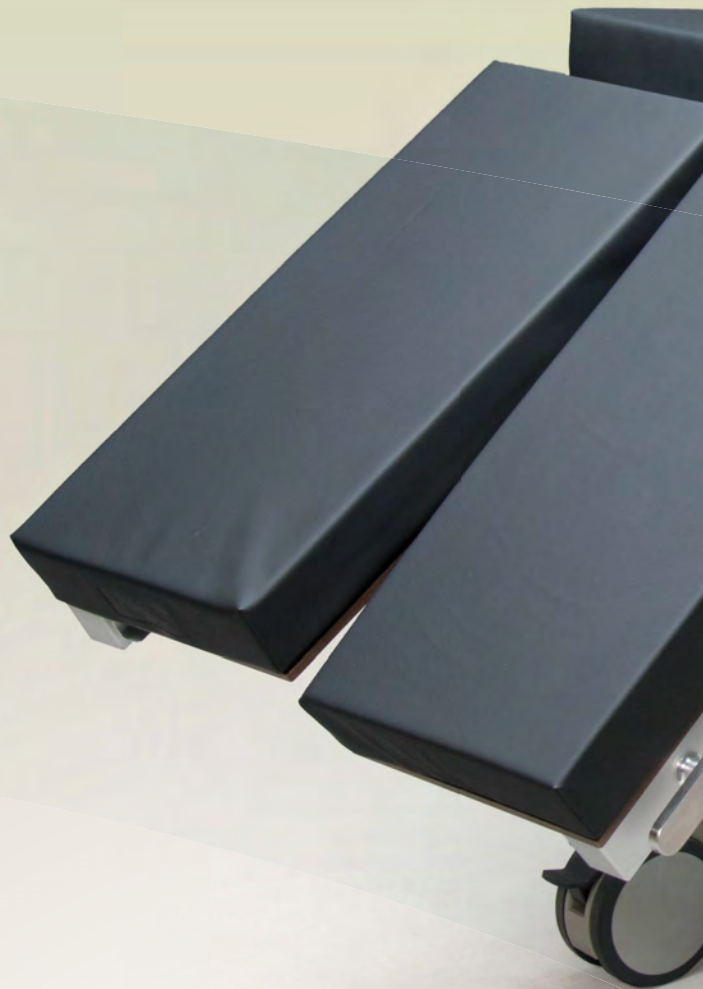


Connection for battery charger.

Lateral tilt  $\pm 20^\circ$ .



*Split 4-sectional leg section, gas spring operated. Detachable, 90° swivelling.*





*Foot joystick four (4) way.  
Up/down, Trend/rev. Trend.*

*Patient weight capacity:  
250 kg (swl)*



*Mobile base with four twin lock castors for highest manouverability.*



*Special back section for  
Shoulder Arthroscopy  
(beach chair position).*

*Two detachable sections,  
left and right, for maximum  
access to the surgical field.*

*Head rest shown is standard  
configuration. Optional Helmet  
set up available.*

*Patient weight capacity:  
250 kg (swl)*

# JI-5230

The JI-5230 is a special version for Shoulder Arthroscopy (Beach Chair) position, upper body procedures and a variety of Surgical procedures as well.

The table is based on the General Surgery Table JI-5220, both with electric back section for convenient positioning.

Optional Head positioner on special request.

Secure head position in Beach chair position and ideal for all upper extremity procedures.

## **Optional Helmet set up available**



# JI-5220



## Specifications

**Standard length:** 1950 mm  
(head support incl.)

**Standard width:** 530 mm  
(side rails excl.)

**Minimum height:** 670 mm  
(mattress excl.)

**Maximum height:** 970 mm  
(mattress excl.)

**Trendelenburg:** 20°

**Rev. Trendelenburg:** 20°

**Lateral tilt:** ± 20°

**Back section:** -20° to +50°

**Leg section:** 0 – 90°

**Head rest:** -20° to +50°

**Battery type:** Lead, 7Ah, 24V/DC

**Battery charger:** 220-240/50 Hz

**Accessory side rails,  
stainless steel:** 25 × 10 mm

**Weight** 110 kg  
(accessories excl.)

**Patient weight capacity:** 250 kg (SWL)



**CERTIFICATE**  
No. P10213121



# JI-5230



## Specifications

|  |              |   |                   |
|--|--------------|---|-------------------|
| <b>Standard Length</b><br>(head support incl.) | 1950 mm      | <b>Leg section</b>                                | 0–90°             |
| <b>Standard Width</b><br>(side rails excl.)    | 530 mm       | <b>Head rest</b>                                  | ±80°              |
| <b>Minimum height</b><br>(mattress excl.)      | 670 mm       | <b>Battery type:</b>                              | Lead, 7Ah, 24V/DC |
| <b>Maximum height</b><br>(mattress excl.)      | 970 mm       | <b>Battery charger:</b>                           | 220-240/50 Hz     |
| <b>Trendelenburg</b>                           | 20°          | <b>Accessory side rails,<br/>stainless steel:</b> | 25×10 mm          |
| <b>Rev. Trendelenburg</b>                      | 20°          | <b>Weight</b><br>(accessories excl.)              | 110 kg            |
| <b>Lateral tilt</b>                            | ±20°         | <b>Patient weight capacity:</b>                   | 250 kg (SWL)      |
| <b>Back section</b>                            | -20° to +50° |   |                   |



**CERTIFICATE**  
No. P10213121



# Operating Table Accessories



10-380 Armboard



10-304 Radial Clamp



10-305 Radial clamp "hook-on"



10-390 Arm & Hand Surgery Table



10-402 Infusion Stand



10-310 Anesthesia Frame



10-390-K Arm & Hand Surgery Table

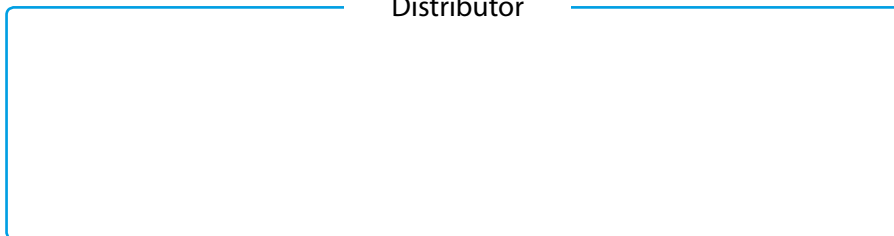


10-353 Knee Arthroscopy Holder



10-450 Leg Holders with Ball Joint

Distributor



**Jostedal Industrier AS**  
Gjerde  
NO-6871 Jostedal  
NORWAY

Phone: +47 63 82 36 87  
Fax: +47 63 82 36 88  
E-mail: [post@hospital.no](mailto:post@hospital.no)  
Web: [www.hospital.no](http://www.hospital.no)