

FibroScan[®] touch 502



INNOVATION IN
LIVER DISEASE MANAGEMENT
DUAL FUNCTION DIAGNOSTICS



Now powered by both **VCTE™** and **CAP™**

State-of-the-art of the non-invasive diagnostics

Only FibroScan® can provide the combined benefits of Vibration Controlled Transient Elastography (VCTE™) and Controlled Attenuation Parameter (CAP™) in a single, non-invasive test.

FibroScan® is the reference for the non-invasive assessment of liver disease in the major treatment guidelines

| Society | Region |
|-------------------------|--------|
| AASLD ¹ | USA |
| AGA ² | USA |
| AASLD/IDSA ³ | USA |
| WHO ⁴ | World |
| EASL ⁵ | Europe |
| NICE ⁶ | UK |

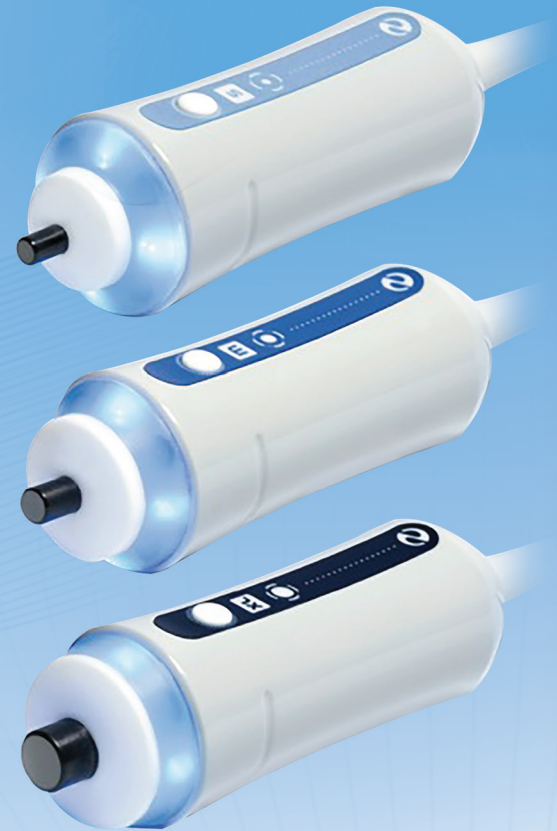
1. Diagnosis and Management of Nonalcoholic Fatty Liver Disease: Practice Guidance from the American Association for the Study of Liver Diseases
2. Institute Technical Review on the Role of Elastography in Chronic Liver Diseases
3. Recommendations for Testing, Managing and Treating Hepatitis C; When & In Whom to Initiate Antiviral Therapy, AASLD & IDSA Practice Guidelines; www.hcvguidelines.org
4. WHO Guidelines for Screening, Care and Treatment of Persons with Hepatitis C Infection; ISBN 978 92 4 154875 5
5. EASL Clinical Practice Guidelines : Noninvasive Tests for Evaluation of Liver Disease Severity and Prognosis; Journal of Hepatology 2015
6. Diagnosis and Management of Chronic Hepatitis B in Children, Young People & Adults; guidance.nice.org.uk/cg165

The CAP capability module is not FDA cleared for pediatric testing.

FibroView™

Review & Reporting Software

- Increase workflow efficiency by reviewing studies and generating reports at the convenience of the physician's computer
- Generate PDF reports with integrated physician interpretation commentary
- Customize report format to physician preference and disease group
- PC & MAC compatible!



Probes

- S+ Probe for Pediatric Patients
- M+ Probe for Adult Patients
- XL+ Probe for Overweight Patients

Indications for Use

The FibroScan® system is intended to provide 50Hz shear wave speed measurements and estimates of stiffness as well as 3.5MHz ultrasound coefficient of attenuation (CAP, Controlled Attenuation Parameter). The shear wave speed and stiffness; and CAP may be used as an aid to clinical management of adult patients with liver disease.

The shear wave speed and stiffness may be used as an aid to clinical management of pediatric patients with liver disease.

FibroScan[®] touch 502

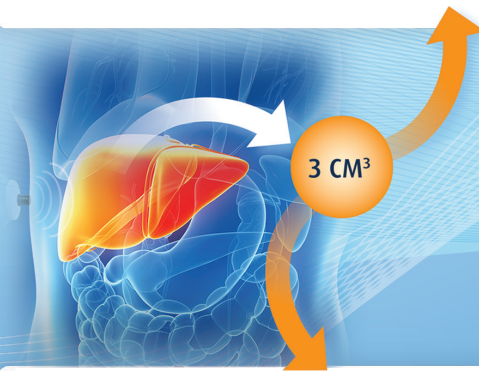
DUAL FUNCTION Liver Diagnostics

STIFFNESS ASSESSMENT



- Mechanically induced 50 Hz shear wave
- Measure shear wave speed with pulse echo ultrasound
- Liver stiffness calculated and expressed as a median over 10 measurements

VCTE™



- Large 3 cm³ sample size compensates for liver tissue heterogeneity
- Liver stiffness and attenuation rate assessed from the same measurements
- Stiffness and CAP measurements are averaged across a volume that is 100x larger than the volume studied by liver biopsy*

CONTROLLED ATTENUATION RATE



- CAP™ is computed from the ultrasound acquired for stiffness measurement
- CAP™ is only calculated if the stiffness acquisition is valid
- CAP™ is expressed in decibel per meter (dB/m)

CAP™

*Bandar Al Knawy, Mitchell Shiffman. Percutaneous Liver Biopsy in Clinical Practice. Liver International. 2007;27(9):1166-1173.

The FibroScan[®] 502 Touch examination is reimbursed by most medical insurance plans.

Learn more from your personal product representative at (781) 790-0845 or visit us www.echosens.us



ECHSENS NORTH AMERICA • 1050 Winter St. • Waltham, MA 02451
www.echosens.us • 781 790-0845 • inquiries@echosens.us