




No More than what you *want*,
No Less than what you *need*.

SmartTM

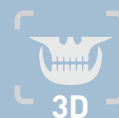


-  **ONE SCAN, TWO IMAGES**
-  **INNOVATIVE COMPRESSED SENSING TECHNOLOGY**
-  **EXTENDED ARCH SHAPED FOV**

SMART INNOVATION

ONE SCAN, TWO IMAGES

One scan with the Smart gives you not just a CT image but also an Auto Pano image. This means, patients who require both images do not need to undergo two X-ray scans. Also, CT and Auto Pano images are displayed within the one viewer feature.



* Conventional panorama mode is provided.



[2D AND 3D IN ONE VIEWER]

Viewing 2D and 3D images together provides many benefits. There is no need to utilize two different software programs and the one viewer feature presents a professional look for your patients.

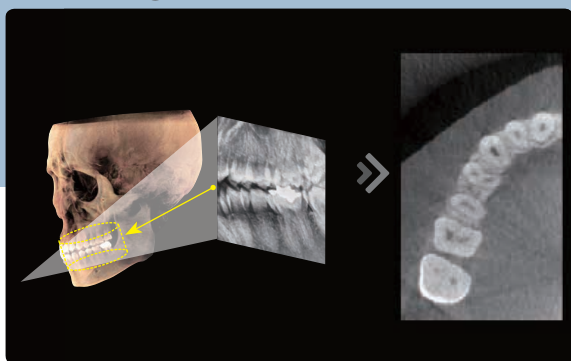
This layout helps patients better understand the images, which will eventually result in increasing acceptance rates.

SMART INNOVATION FOR ACCURATE DIAGNOSIS

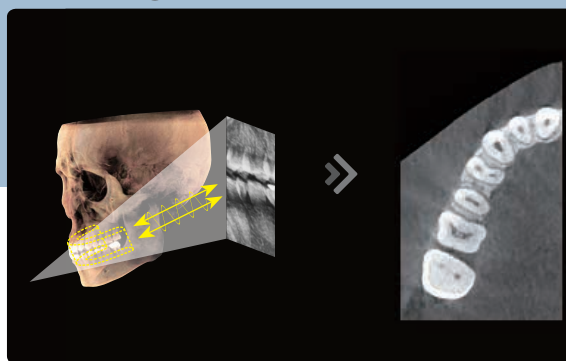
INNOVATIVE COMPRESSED SENSING TECHNOLOGY

3D image quality has dramatically improved based on the innovative image reconstruction technology.

Normal Image Reconstruction

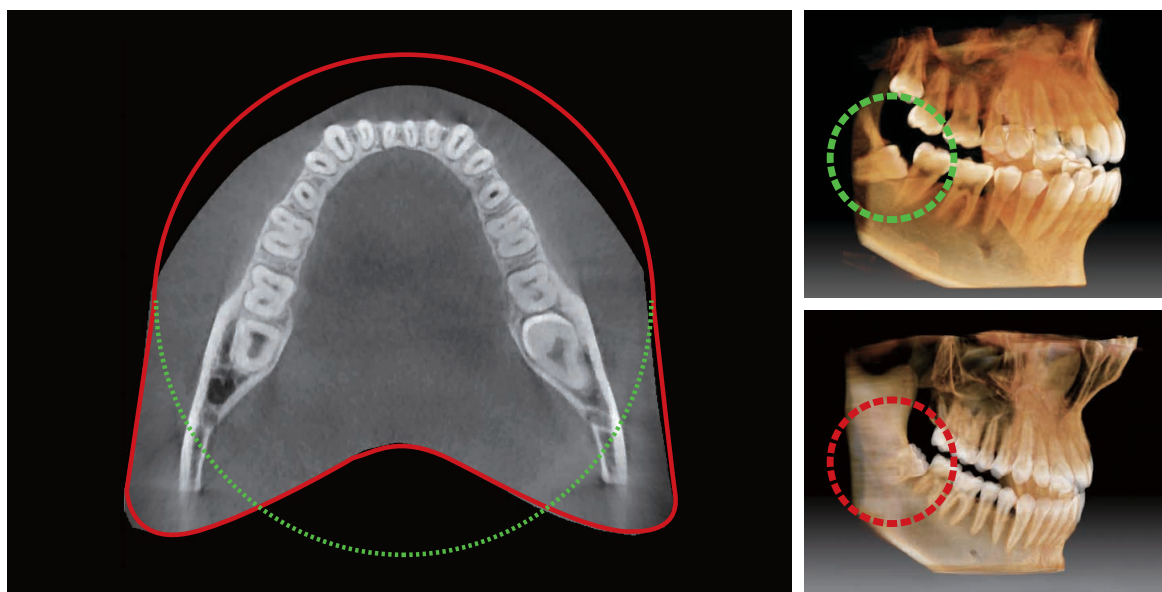


SMART Image Reconstruction



EXTENDED ARCH SHAPED FOV

The innovative FOV of the Smart provides an arch-shaped volume, which shows a wider view of dentition compared to other devices of the same FOV. For impacted 3rd molars, there is a high probability that the volume will miss this important anatomy. The "arch shaped volume" of Smart eliminates this possibility and provides the clinician with all the necessary dentition for thorough diagnosis.



PRODUCT CONFIGURATION

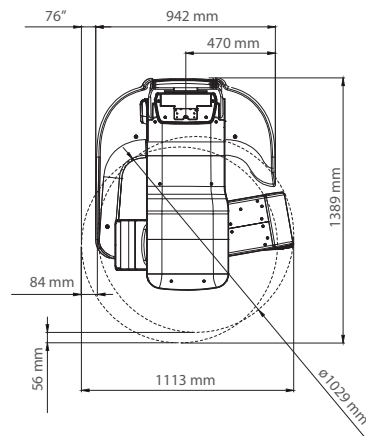
	CBCT	PANO	CEPH
Smart	•	•	—
Smart SC	•	•	•



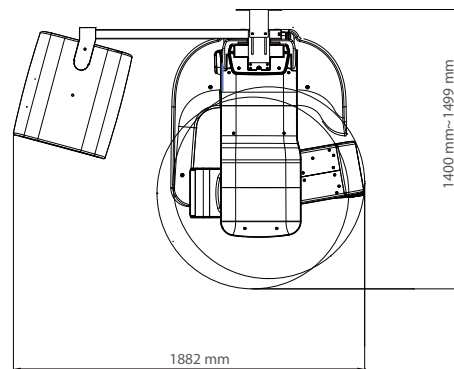
SPECIFICATIONS (Smart : PHT-30LFO)

Function	CT(with Auto Pano) + Pano + Ceph	
Focal Spot	0.5 mm	
CT FOV Size	5X5 cm / 8X8 cm / 10x7 cm / 10X8.5 cm (Anatomical 12X9 cm)	
Voxel Size	0.08 mm / 0.2 mm / 0.3 mm	
Scan Time	CT	18 sec
	Pano	13.6 sec / 7 sec
	Ceph	12.9 sec
Recon Time	CT	Max. 90 sec (10X8.5 / 0.2 Voxel Basis)
	Pano	Less than 2 sec
Gray Scale	14 bit	
Tube Voltage / Current	50 - 99 kVp / 4 -16 mA	

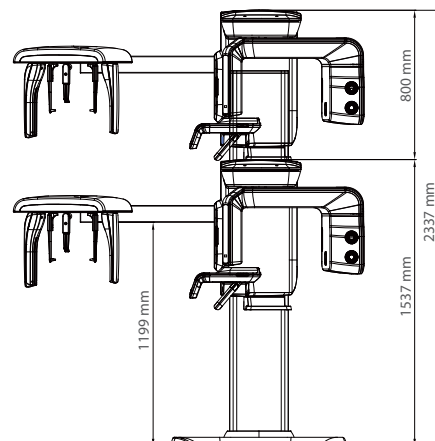
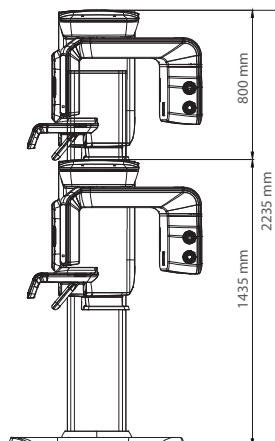
DIMENSIONS [Unit: mm]



TOP VIEW



FRONT VIEW



***An additional 3 inches (76.2 mm) of space is required behind the unit for wall mount bracket installation (mandatory unless there is a base mount installation).**