

**OLYMPUS**<sup>®</sup>

Your Vision, Our Future

EVIS  
**EXERA II**

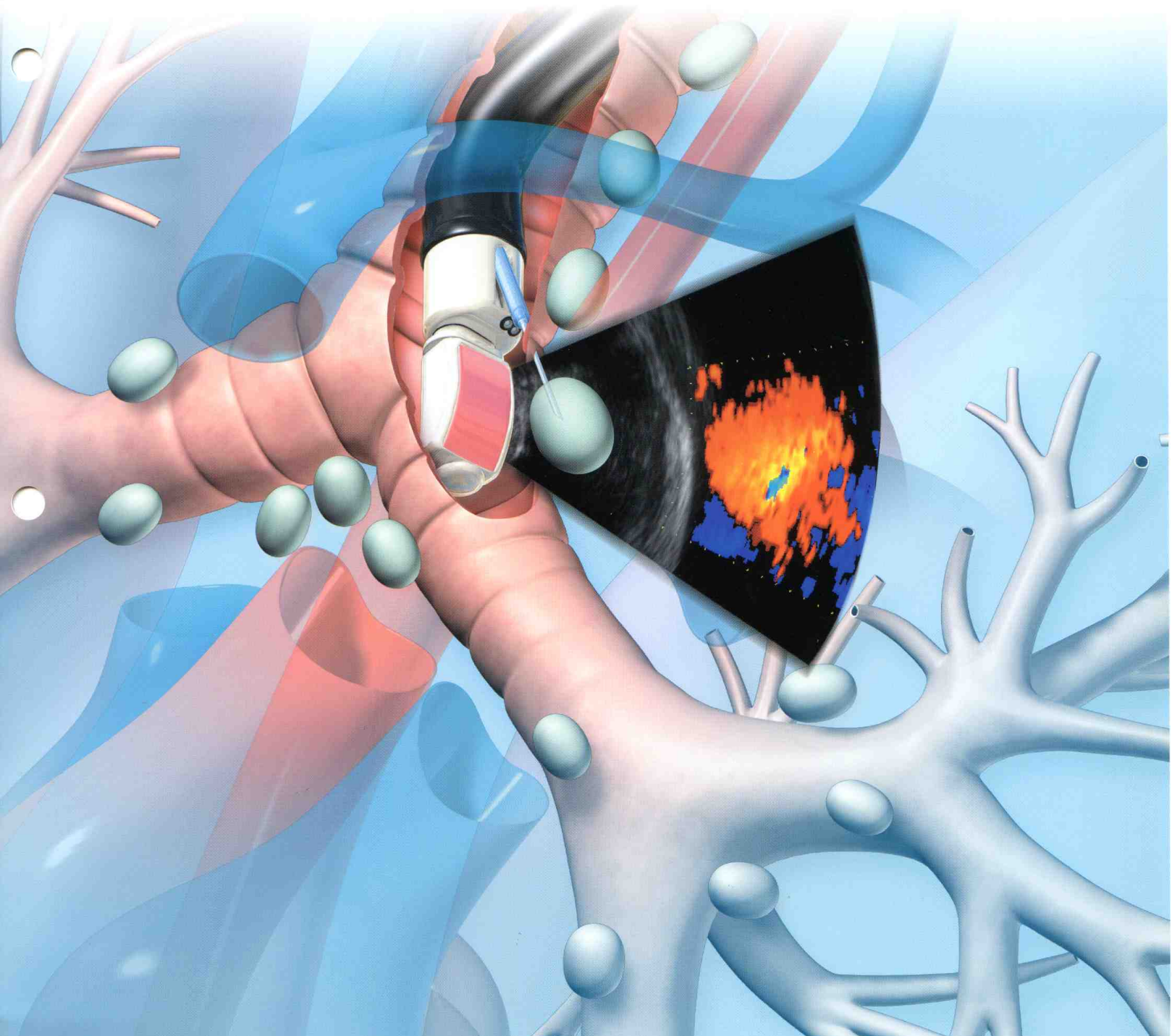
EVIS EXERAII ULTRASONIC BRONCHOFIBERVIDEOSCOPE

OLYMPUS **BF** TYPE **UC180F**



**EBUS-TBNA**

Setting a new standard for diagnosis and staging in the lung

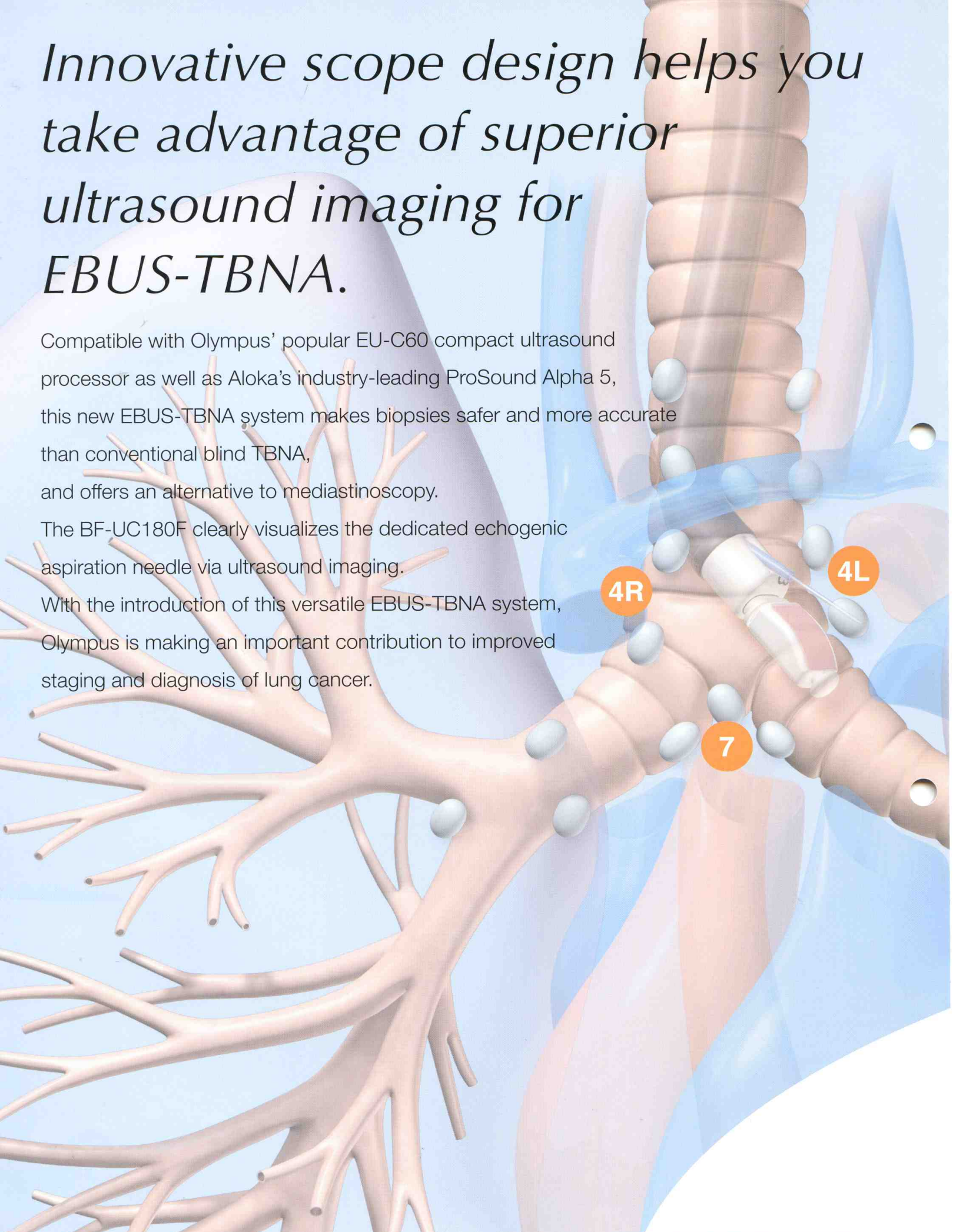


# *Innovative scope design helps you take advantage of superior ultrasound imaging for EBUS-TBNA.*

Compatible with Olympus' popular EU-C60 compact ultrasound processor as well as Aloka's industry-leading ProSound Alpha 5, this new EBUS-TBNA system makes biopsies safer and more accurate than conventional blind TBNA, and offers an alternative to mediastinoscopy.

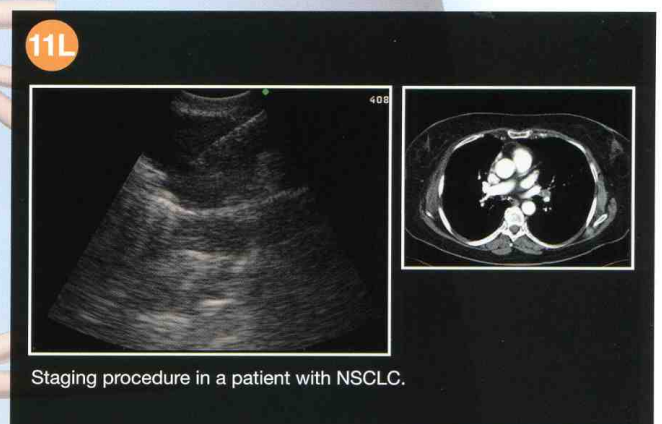
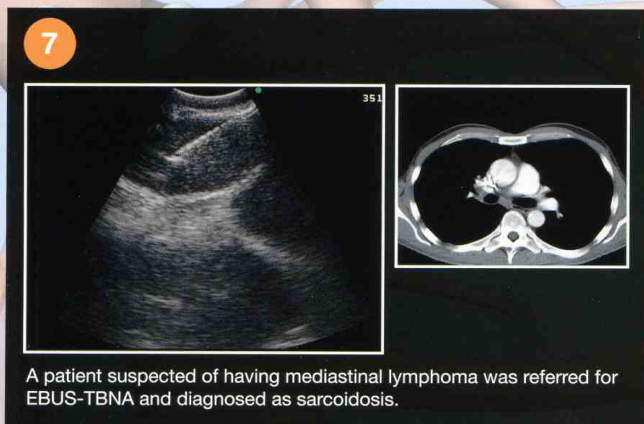
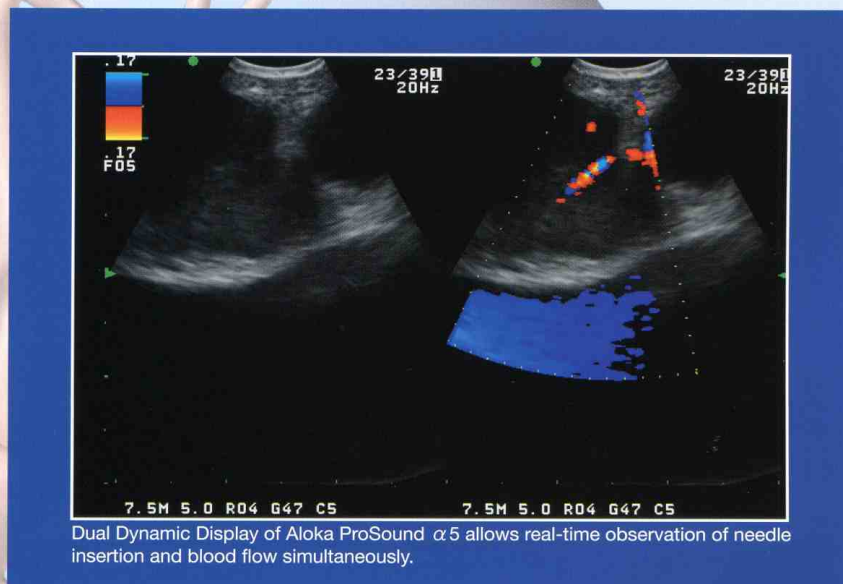
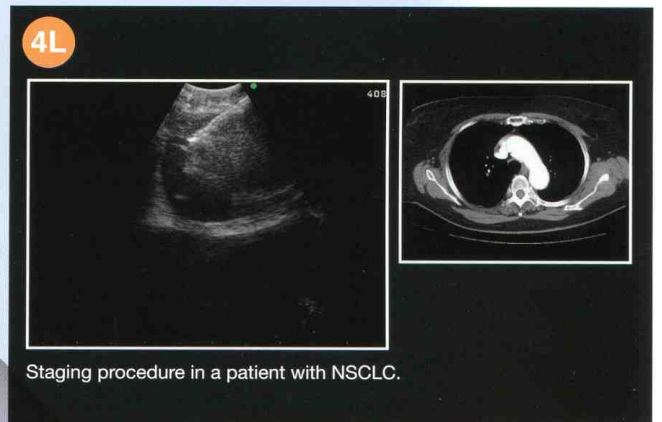
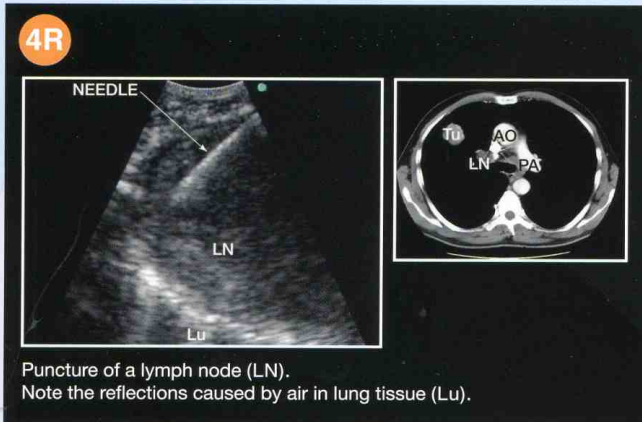
The BF-UC180F clearly visualizes the dedicated echogenic aspiration needle via ultrasound imaging.

With the introduction of this versatile EBUS-TBNA system, Olympus is making an important contribution to improved staging and diagnosis of lung cancer.





# Clinical cases



# Wide 2.2 mm diameter channel and innovative detachable ultrasound cable

## Features

- Channel diameter enlarged to 2.2 mm for improved suction capability and device insertion.
- Convenient new scope design with detachable ultrasound cable makes it possible to use the same scope with either Olympus EU-C60 or Aloka ProSound  $\alpha$ 5. Just connect the cable to the system you want to use.
- Wider scanning and higher resolution image, plus higher sensitivity Doppler function available with ProSound  $\alpha$ 5.
- Detachable cable simplifies cleaning and facilitates easier placement into an automatic endoscope reprocessor.
- Innovative "hybrid" design combines video and fiberoptic technologies in a single scope, offering the same functionality as videoscopes yet with a slim insertion tube diameter of only 6.3 mm\*, even with an incorporated ultrasound transducer.

\*Distal tip diameter measures 6.9 mm.

11L

EVIS EXERAII ULTRASONIC BRONCHOFIBERVIDEOSCOPE  
OLYMPUS **BF** TYPE **UC180F**

HYBRID  
SCOPE



Now a choice of two high-performance ultrasound processors



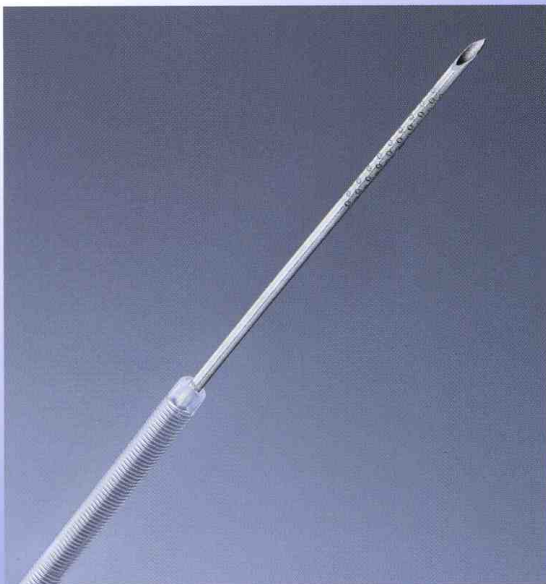
**ALOKA DIAGNOSTIC  
ULTRASOUND SYSTEM  
ProSound  $\alpha$ 5**

- Higher resolution and wider 60-degree scanned image
- Quad frequency imaging
- Tissue Harmonic Echo
- Higher sensitivity Color and Power Doppler
- Dual Dynamic Display
- DICOM compatible digital data output



**EUS EXERA COMPACT ENDOSCOPIC  
ULTRASOUND CENTER  
EU-C60**

- Compact and easy-to-use
- Color Power Doppler
- Switch between ultrasound and endoscopic images on the same monitor



**SINGLE USE ASPIRATION NEEDLE  
NA-201SX-4022**

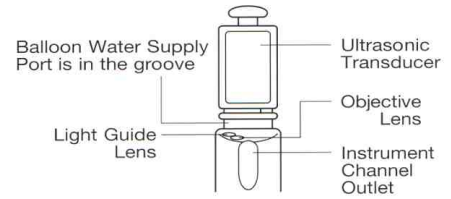
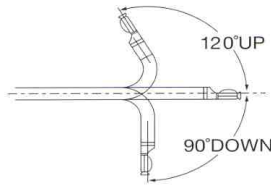
Echogenic dimpled needle tip for improved visibility on ultrasound images



**Features**

- Specifically designed for use with EBUS-TBNA scopes
- 22-gauge outer diameter
- Adjustable needle length
- Pre-sterilized and single-use

**ViziShot**

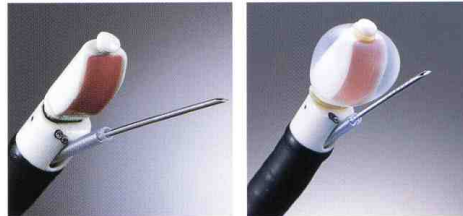


### BF-UC180F Specifications

Model		BF-UC180F	
Endoscopic functions	Optical system	Field of view	80 degree
		Direction of view	35 degree forward oblique
		Depth of field	2 to 50 mm
	Insertion tube	Distal end outer diameter	6.9 mm
		Insertion tube outer diameter	6.3 mm
		Working length	600 mm
	Instrument channel	Channel inner diameter	2.2 mm
		Direction from which Endo-Therapy accessories enter and exit the endoscopic image	
Bending section	Angulation range	UP 120, Down 90	
Total length		890 mm	
		<b>With ALOKA ProSound α5</b>	<b>With OLYMPUS EU-C60</b>
Ultrasonic functions	Ultrasonic cable	MAJ-1597 (1,500 mm)	MAJ-1722 (1,200 mm)
	Display mode	B-mode, M-mode, D-mode, Flow-mode, Powerflow-mode	B-mode, Color Power Doppler mode
	Scanning method	Electronic curved linear array	
	Scanning direction	Parallel to the insertion direction	
	Frequency	5 / 7.5 / 10 / 12 MHz	7.5 MHz
	Tissue Harmonic Echo	5.0P / 6.0S / 6.0R / 7.5H	N/A
	Scanning range	60 degree	50 degree
	Focusing Point	A maximum of 4 focusing points are available.	Fixed
Contacting method	Balloon method, Direct contacting method		

### NA-201SX-4022 Specifications

Model	NA-201SX-4022
Maximum Insertion Portion Diameter	1.8 mm
Working Length	700 mm
Needle Width	22 G
Needle Length	40 mm



Any product in our brochures that features this is part of the lineup of Olympus fine-needle aspiration biopsy product.

Specifications, design and accessories are subject to change without any notice or obligation on the part of the manufacturer.

**OLYMPUS**

**OLYMPUS MEDICAL SYSTEMS CORP.**  
Shinjuku Monolith, 3-1 Nishi-Shinjuku 2-chome, Shinjuku-ku, Tokyo 163-0914, Japan  
**OLYMPUS MEDICAL SYSTEMS EUROPA GMBH**  
Postfach 10 49 08, 20034 Hamburg / Wendenstrasse 14-18, 20097 Hamburg, Germany  
**OLYMPUS AMERICA INC.**  
3500 Corporate Parkway, P.O. Box 610, Center Valley, PA 18034-0610, U.S.A.  
**OLYMPUS SURGICAL & INDUSTRIAL AMERICA INC.**  
One Corporate Drive, Orangeburg, New York 10962, U.S.A.  
**OLYMPUS LATIN AMERICA, INC.**  
5301 Blue Lagoon Drive, Suite 290 Miami, Florida 33126-2097, U.S.A.  
**OLYMPUS KEYMED GROUP LTD.**  
Keymed House, Stock Road, Southend-on-Sea, Essex SS2 5QH, England

**OLYMPUS SINGAPORE PTE LTD.**  
491B River Valley Road #12-01/04 Valley Point Office Tower, Singapore 248373  
**OLYMPUS HONG KONG AND CHINA LIMITED**  
L43, Office Tower, Langham Place, 8 Argyle Street, Mongkok, Kowloon, Hong Kong  
**OLYMPUS (BEIJING) SALES & SERVICE CO., LTD.**  
Room.1202, NCI Tower, A12 Jianguomenwai Avenue Chaoyang District Beijing, 100022, China  
**OLYMPUS MOSCOW LIMITED LIABILITY COMPANY**  
117071, Moscow, Malaya Kaluzhskaya 19, bld. 1, fl.2, Russia  
**OLYMPUS AUSTRALIA PTY LTD**  
31 Gilby Road, Mount Waverley, VIC., 3149, Australia  
**OLYMPUS KOREA CO., LTD.**  
4F, 5F, Gyeongnam Bldg., 157-27, Samseong-dong, Gangnam-ku, Seoul, Korea

www.olympus.com