

## GIF-HQ190

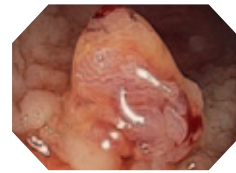
Amazing image quality for upper GI endoscopy.



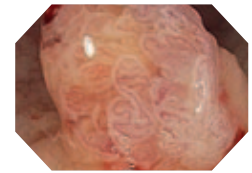
## Main features

### Dual focus

Dual focus, a unique OLYMPUS optical innovation, allows the user to select from two focus settings. With the simple push of a scope button, the desired depth of field for optimal observation can be selected – near focus mode or normal focus mode.



Normal focus  
Image courtesy of  
Roy Soetikno, MD



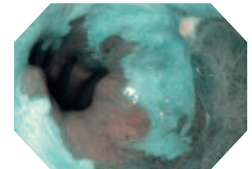
Near focus  
Image courtesy of  
Roy Soetikno, MD

### NBI (Narrow Band Imaging)

NBI in EVIS EXERA III 190 series scopes provides twice the viewable distance of EVIS EXERA II 180 series scopes and offers much greater contrast between blood vessels and mucosa. The greatly improved performance of NBI opens up exciting new clinical applications and reinforces NBI's position as the standard of care for GI endoscopy.



White light  
Image courtesy of  
Horst Neuhaus, MD



NBI  
Image courtesy of  
Horst Neuhaus, MD

### Enhanced image quality

A new level of resolving power is achieved thanks to a new optical system. Significantly less halation and noise is visible on screen. And the pre-freeze function automatically selects the sharpest still images.

### Water jet

EVIS EXERA III 190 series scopes' forward water jet function is standard on all routine gastroscopes. This technology improves procedures and treatment.

### Waterproof One-touch Connector

A new connector design minimises the effort required for set-up prior to and in between cases. In addition, it is fully submersible and eliminates the need for a water-resistant cap and the associated risk of an expensive repair due to accidental immersion.



### Specifications

<b>Optical system</b>	Field of view	Normal 140°	Near 140°
	Direction of view	Forward viewing	
	Depth of field	Normal 5–100 mm	Near 2–6 mm
<b>Insertion section</b>	Distal end outer diameter	9.9 mm	
	Distal end enlarged		
<b>Instrument channel</b>			
	Insertion tube outer diameter	9.9 mm	
	Working length	1030 mm	
	Channel inner diameter	2.8 mm	
	Minimum visible distance	3.0 mm from the distal end	
	Direction from which endotherapy accessories enter and exit the endoscopic image		



<b>Bending section</b>	Angulation range	Up 210°
		Down 90°
		Right 100°
		Left 100°
<b>Total length</b>	1350 mm	
<b>Compatible EVIS EXERA system</b>	Video system center OLYMPUS CV-190 Xenon light source OLYMPUS CLV-190	

Specifications, design and accessories are subject to change without any notice or obligation on the part of the manufacturer.